



## Agenda

**Meeting:** Regular Meeting No. 11 (virtual)  
**Date/Time:** Monday, November 16, 2020, 4:00 pm  
**Zoom Info:** Link: <https://us02web.zoom.us/j/81259075822>  
Dial-in: +1 253 215 8782  
ID: 812 5907 5822

ITEM	LEAD	DURATION
<b>Call to Order</b>		
1. Review of Meeting Notes (October 19, 2020) (Attachment 1)	Chair Bahbah	3 min.
2. Public Comment (Written comments only; due by 2:00 p.m. of meeting day; submitted to <a href="mailto:planning@cityoftacoma.org">planning@cityoftacoma.org</a> )		
3. "Chat" Protocol		
<b>Discussion/Action Items</b>		
1. Debriefing / Take-away's from Pervious Presentations a. ULI b. Puyallup Ave c. ST Access	Chair Bahbah and Vice-Chair Erickson	15 min.
2. TODAG Meeting Schedule (Attachment 2)	Chair Bahbah and Vice-Chair Erickson	5 min.
3. Puyallup Avenue Design Project (Check-in)	Mark D'Andrea Public Works	5 min.
4. Multi-Jurisdictional Roundtable: TDLE – Portland Avenue Station Area (Attachment 3)	Sound Transit Puyallup Tribe Port of Tacoma WSDOT Pierce Transit City of Tacoma	60 min.
<b>Communication Items</b>		
1. Bus Rapid Transit Project (Open House 12/10/20)	Tina Lee Pierce Transit	5 min.
2. Transportation Commission Recommendations for the 2021-2022 Biennial Budget (Attachment 4)	Lihuang Wung	1 min.
3. "Who's Missing: Equity and Inclusion in the City" (Attachment 5)	Lihuang Wung	1 min.

- 
- |   |              |        |
|---|--------------|--------|
| 4. Tentative Agenda for Future Meetings:                | Chair Bahbah | 2 min. |
| a. TDLE – Portland Avenue Station Area (Recommendation) |              |        |
| b. Puyallup Avenue Design Project                       |              |        |
| c. Developers Focus Group                               |              |        |
| d. CED Presentation                                     |              |        |
| e. TODAG Work Plan and Schedule for 2020-2021           |              |        |
| f. Quiet Zone Update                                    |              |        |
- 

- |                                    |              |        |
|------------------------------------|--------------|--------|
| 5. Closing Comments / New Business | Chair Bahbah | 3 min. |
|------------------------------------|--------------|--------|
- 

### Adjournment

---

**Next Meeting:** Monday, December 21, 2020, 4:00 p.m.

### Attachments:

1. Meeting Notes of October 19, 2020
2. TODAG Meeting Schedule (11-12-20 draft)
3. Roundtable Presentations (PowerPoints) – TDLE Portland Avenue Station Area
4. Transportation Commission Recommendations for the 2021-2022 Biennial Budget, November 9, 2020
5. “Who’s Missing: Equity and Inclusion in the City” – A lecture by Prof. Rubén Casas, University of Washington Tacoma, sponsored by Conversations Regarding Tacoma; Tuesday, November 17, 2020, 5:00-6:00 p.m. For more information and to register, visit <http://tacomaconversations.org>.

**CITY of TACOMA**  
**TRANSIT ORIENTED DEVELOPMENT ADVISORY GROUP (TODAG)**  
**MEETING NOTES**

**MEETING NO.:** 10-2020  
**MEETING DATE:** October 19, 2020

---

**Members Present:** Chair Imad Bahbah, Vice-Chair Don Erickson, Adam Cook (in place of Kim Bedier), Ben Ferguson, Cathy Reines, Chris Karnes, Daren Crabill, David D’Aniello, Evett Mason, Janice McNeal, Justin Leighton, Kerri Hill, Rick Semple, Roberta Schur, Ryan Givens

**Visitors:** John Hempelmann (Cairncross & Hempelmann), Dana Brown (COT/PW), Josh Diekmann (COT/PW), Jennifer Kammerzell (COT/PW), Eric Chipps (Sound Transit), Sue Comis (Sound Transit), Keith Walzak (VIA Architecture), Pat Beard (COT/CED), Tina Lee (Pierce Transit)

**Staff Support:** Brian Boudet (COT), Lihuang Wung (COT), BT Doan (COT)

**ITEM 01: CALL TO ORDER**

Chair Imad Bahbah called the meeting to order at 4:06 p.m.

1. The meeting notes of September 21, 2020 were reviewed.
2. No public comment.

**ITEM 02: DISCUSSION/ACTION ITEMS**

**1. “Tacoma Dome District Transit Oriented Development” (ULI-TAP Report)**

- (a) John Hempelmann (Cairncross & Hempelmann) introduced himself and provided context information for the Urban Land Institute Northwest Technical Assistant Panel (ULI-TAP) report.
- (b) The report focused on the transit-oriented development in the Tacoma Dome District, particularly Sound Transit’s Tacoma Dome Link Station design.
- (c) The report favored the “Close-to-Sounder” alternative and recommended incorporating the following elements:
  - i. Multi-modal and elevated station design with activated “under rail” spaces.
  - ii. Pedestrian bridge connecting the station and the Tacoma Dome.
  - iii. Improved streetscape and enhanced pedestrian amenities, ideally along East D St.
  - iv. Leveraging available parking spaces and collaborating with developers to provide mixed-use parking.
  - v. Revised zoning code to allow for diverse designs and developments.
  - vi. Plan for affordable housing in the District at different income levels.
  - vii. Masterplan for the area.
  - viii. Transportation Benefit District.
- (d) Justin Leighton commented on the suggestion for the pedestrian bridge landing on the Tribal land and activation underneath the guideway tail.
- (e) Ryan Givens asked about what could be done to realize the recommendations in the report.

**2. Puyallup Avenue Design Project**

- (a) Dana Brown (City of Tacoma – Public Works) addressed a concern from the last TODAG meeting on September 21, 2020, regarding the conceptual elimination of parking on Puyallup Avenue between East D Street and Pacific Avenue.
- (b) The group discussed the design elements required for the grant, the timeline of the grant, and the approach for engagement and implementation of all projects by different agencies in this area.

**3. Tacoma Dome Link Extension (TDLE) Update**

- (a) Eric Chippis (Sound Transit) provided an update on the project, covering the potential routes and stations, environmental review, and Sound Transit’s virtual open house.
- (b) He guided the group through the open house’s website.
- (c) The request to highlight the “Close-to-Sounder” option being the TODAG’s preferred alternative on the website was debated.

**4. TODAG Work Plan and Schedule for 2020-2021**

- (a) The TODAG Work Plan items were categorized into three (3) types:
  - i. Review items: projects that the group would need to know (presentations, reports, etc.) to make informed decisions.
  - ii. Actions items: projects for which the group would provide recommendations.
  - iii. Recommended studies by others: projects done by other bodies that, if possible, the group would review and discuss.
- (b) The updated schedule was presented and reviewed.
- (c) A concern was expressed over Pierce Transit’s Bus Rapid Transit not being adequately discussed.

**ITEM 03: COMMUNICATION ITEMS**

- 1. “Keeping Blue Collars in Green Cities: From TOD to TOM?” – Suggested reading; an article by Yonn A. Dierwechter and Mark Pendras (Urban Planning professors at the University of Washington – Tacoma).
- 2. TDLE Online Open House – The deadline had been extended to November 2, 2020. The group members were encouraged to participate to offer their feedback.
- 3. Tentative Agenda for Future Meetings:
  - (a) TDLE – East Tacoma Station Area (including presentations by Tribe, Port and WSDOT)
  - (b) TODAG Work Plan and Schedule for 2020-2021
  - (c) Quiet Zone Update

The meeting was adjourned at 6:06 p.m.



# *Sound Transit Update*

*Tacoma TOD Advisory Group*

*11/16/2020*

# TDLE Status Update:

## Completed DEIS phase activities:

- **Select alternatives** to study
- **Identify preferred alternative** for DEIS phase
- Prepare **conceptual station layouts**

DEIS = Draft Environmental Impact Statement

FEIS = Final Environmental Impact Statement

\* Dates subject to change

## Future activities\*:

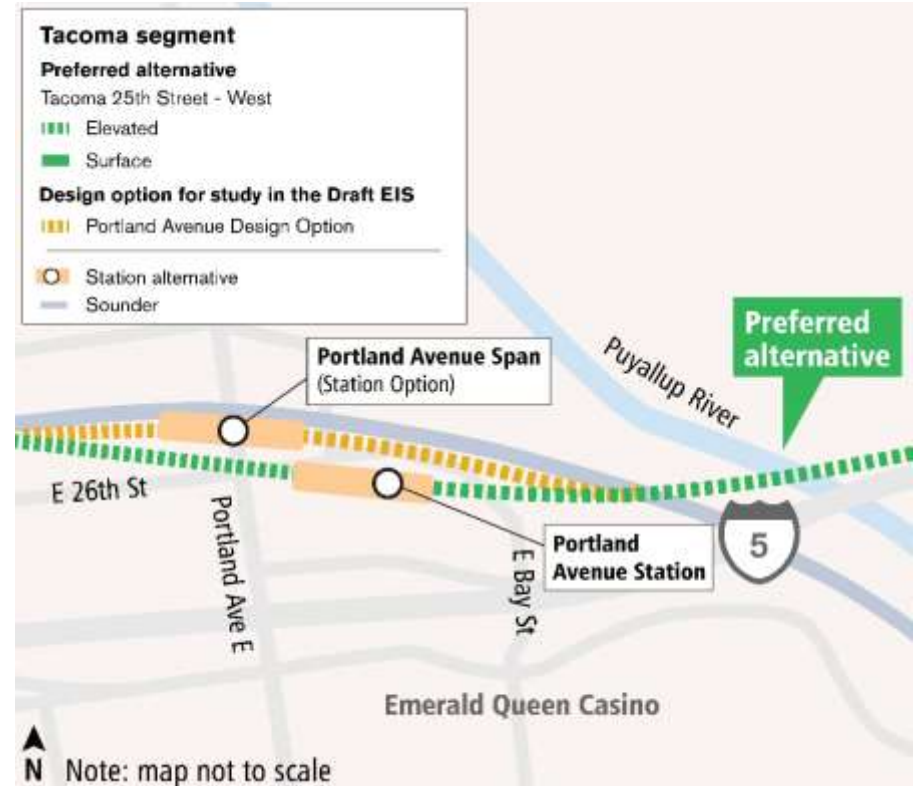
- **Publish DEIS** and invite public comment (*Early 2022*)
- **Confirm or modify the preferred alternative** (route & stations) for FEIS phase (*Mid 2022*)
- **Refine project design** for FEIS
- **Publish the FEIS** (2023)
- **Select project to be built** (2023)

INPUT

INPUT

# Portland Avenue Station: Overview

- Two elevated station alternatives
- Studying ways to improve pedestrian, bicycle, and transit access to station, including:
  - Working with WSDOT to move and widen sidewalks on Portland Avenue under I-5
  - Studying options for a pedestrian & bicycle bridge over I-5





# Portland Avenue: Ped/Bike Bridge Options

## Portland Avenue Station



## Portland Avenue Span Station Option



*Thank you.*



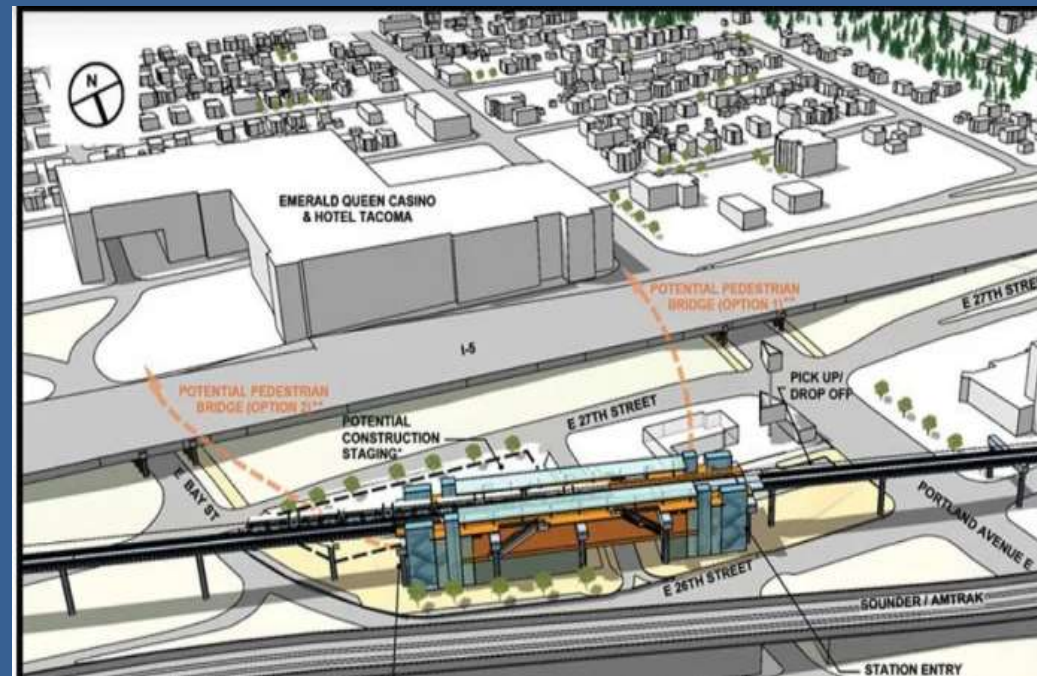
 [soundtransit.org](https://www.soundtransit.org)





## Portland Avenue Station

- Pedestrian Access considerations and future considerations over I-5
- Concerns of existing pedestrian underpasses
- Pedestrian improvements across 27<sup>th</sup> and 28<sup>th</sup>
- Parking conflicts and considerations
- Station that accommodates kiss-and-ride queuing



# Tacoma Dome Station



The Puyallup  
Tribe of Indians

## Tacoma Dome Station

- East 26<sup>th</sup> conflicts and access
- Preserving Tribal property for future development
- Section 106 Cultural Resource considerations



# Tacoma Dome Link Extension: Portland Avenue Station Area

## Port of Tacoma Perspective

November 16, 2020

Christine Wolf, Senior Planner  
Port of Tacoma

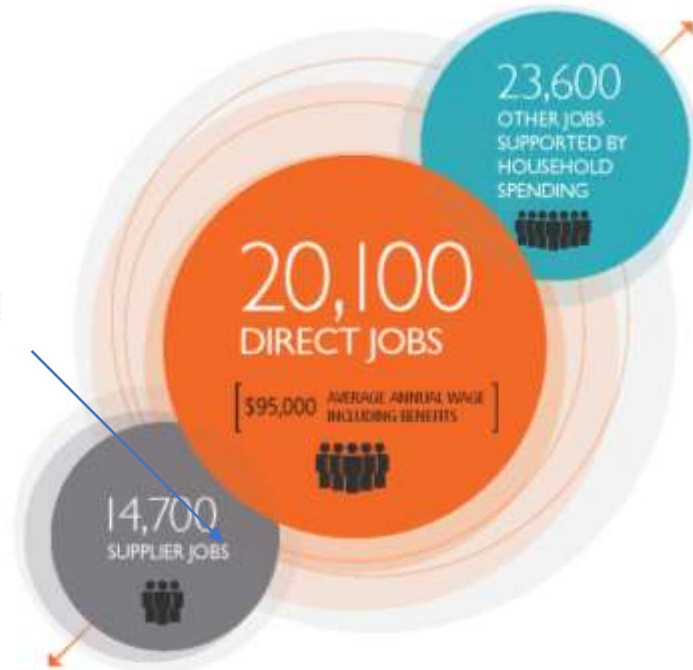
# Economic Impact of The Northwest Seaport Alliance

# 58,400

FAMILY WAGE JOBS SUPPORTED BY NWSA ACROSS WASHINGTON STATE

**2.9**  
[JOB MULTIPLIER]

Every direct job supports an additional 1.9 jobs: that's higher than aerospace and more than twice as high as agriculture and food processing.



DIRECT JOBS INCLUDE:

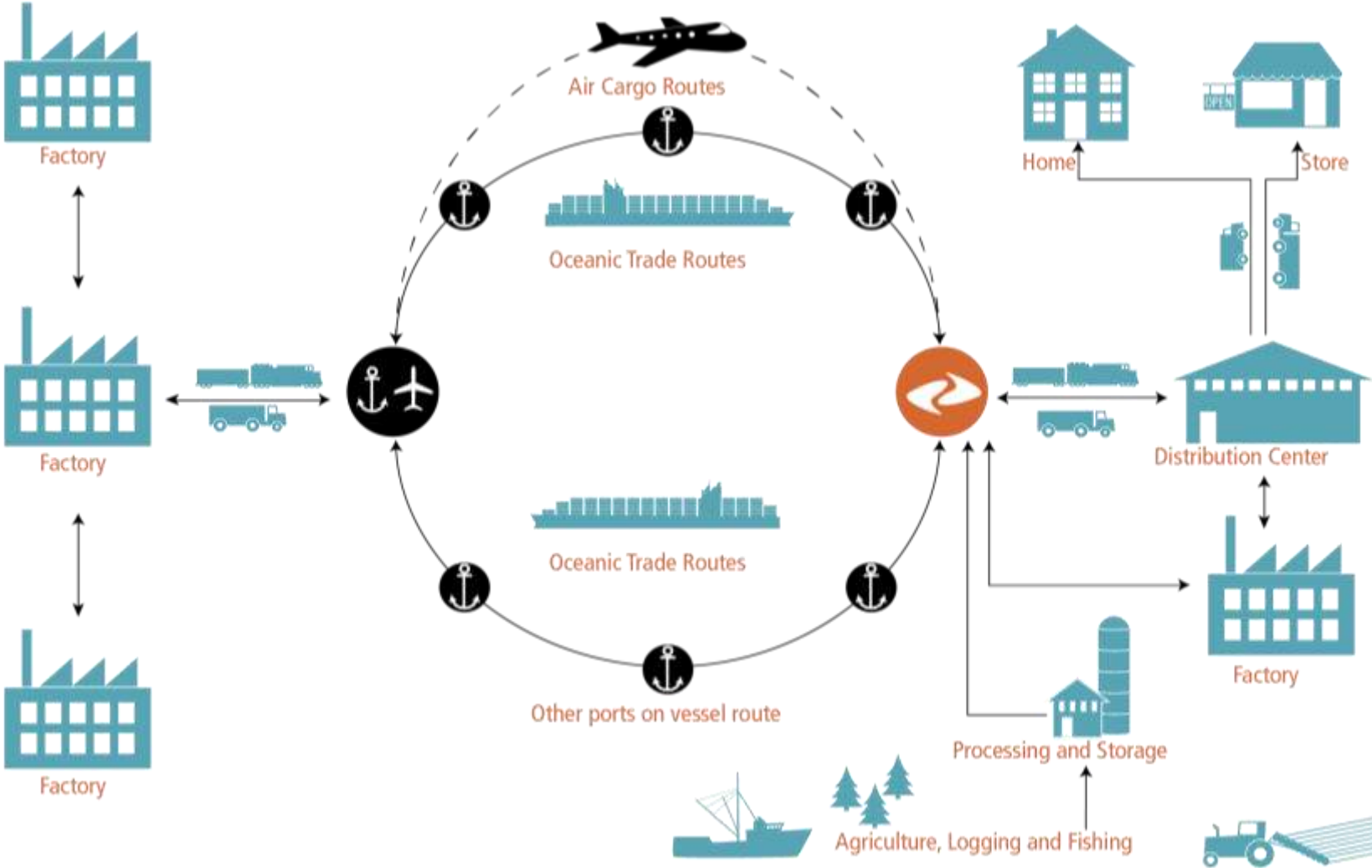
- TRUCKING & WAREHOUSING
- TERMINAL OPERATIONS & DOCKWORKERS
- BARGE & TUG TRANSPORT
- NAVIGATIONAL & OTHER MARITIME SUPPORT SERVICES
- PORT ADMINISTRATION

# \$12.4B

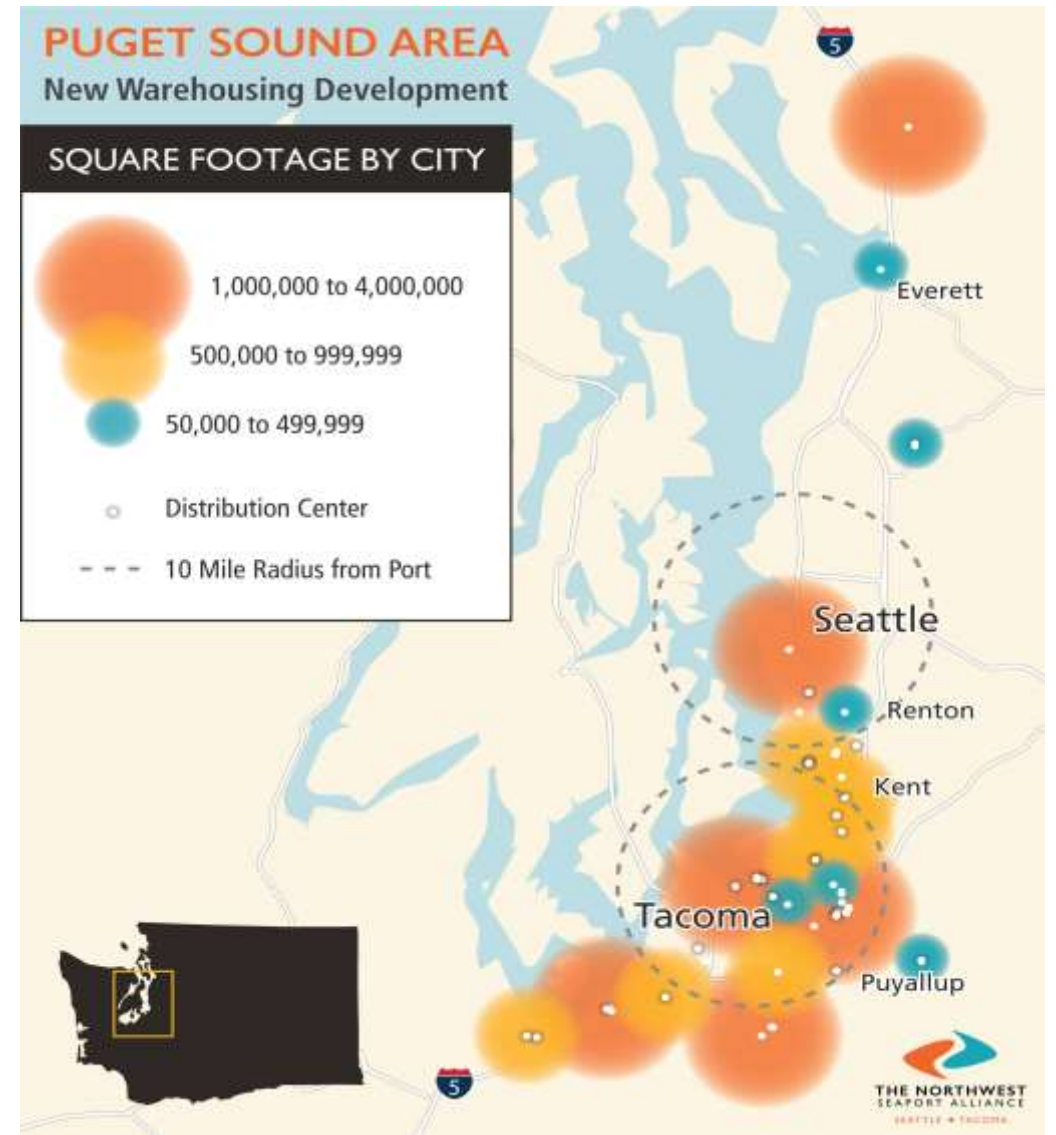
ECONOMIC IMPACT IN WASHINGTON STATE



# Supply Chain Overview



# Warehousing and Distribution Centers





# Thank you!

Christine Wolf, Senior Planner  
Port of Tacoma  
[cwolf@nwseaportalliance.com](mailto:cwolf@nwseaportalliance.com)

# **Portland Avenue Station Area**

## **Transit Oriented Development Advisory Group**

**Philip Harris AICP, Transit Integration Planner**

WSDOT Regional Transit Coordination Division

November 16, 2020

# WSDOT

## Regional Transit Coordination Division

### Role

- Support the planning and conceptual design of Sound Transit high-capacity transit projects and other Central Puget Sound transit agencies
- Coordinate work between WSDOT projects and Sound Transit projects in or near WSDOT right of way
- Integrate multimodal concepts into policies and programs

### Agency Perspective

- Support pedestrian & bicycle access to station and improved connectivity in the station area
- Collaborate with agency and tribal partners on active transportation and Transit Oriented Development (TOD) initiatives

# Portland Avenue/I-5

## Improving Pedestrian & Bicycle Access

### Barriers

- Much of Sound Transit light rail system expansion, including the Tacoma Dome Link Extension, is in or adjacent to WSDOT Right-of-Way - Stations are multimodal hubs
- I-5 is a barrier restricting the number of access routes to the other side
- Portland Ave. underpass is a poor pedestrian environment



# Portland Avenue/I-5

## Improving Pedestrian & Bicycle Access

### Opportunity

- Coordination/Agreement with Sound Transit on improvements to sidewalks under I-5



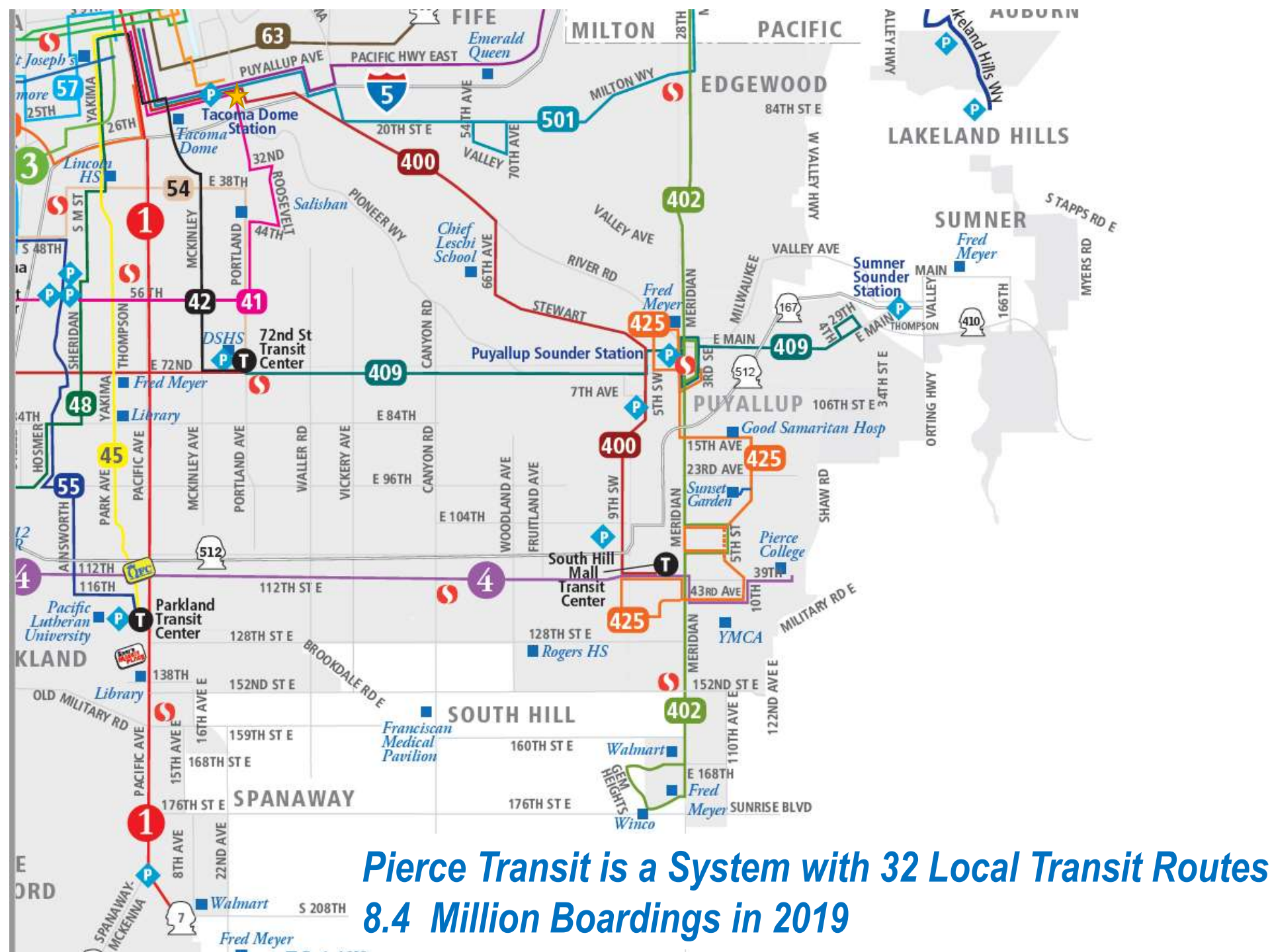


# RideBRT

BUS RAPID TRANSIT TACOMA TO SPANAWAY

TRANSIT ORIENTED DEVELOPMENT ADVISORY GROUP

NOVEMBER 16, 2020

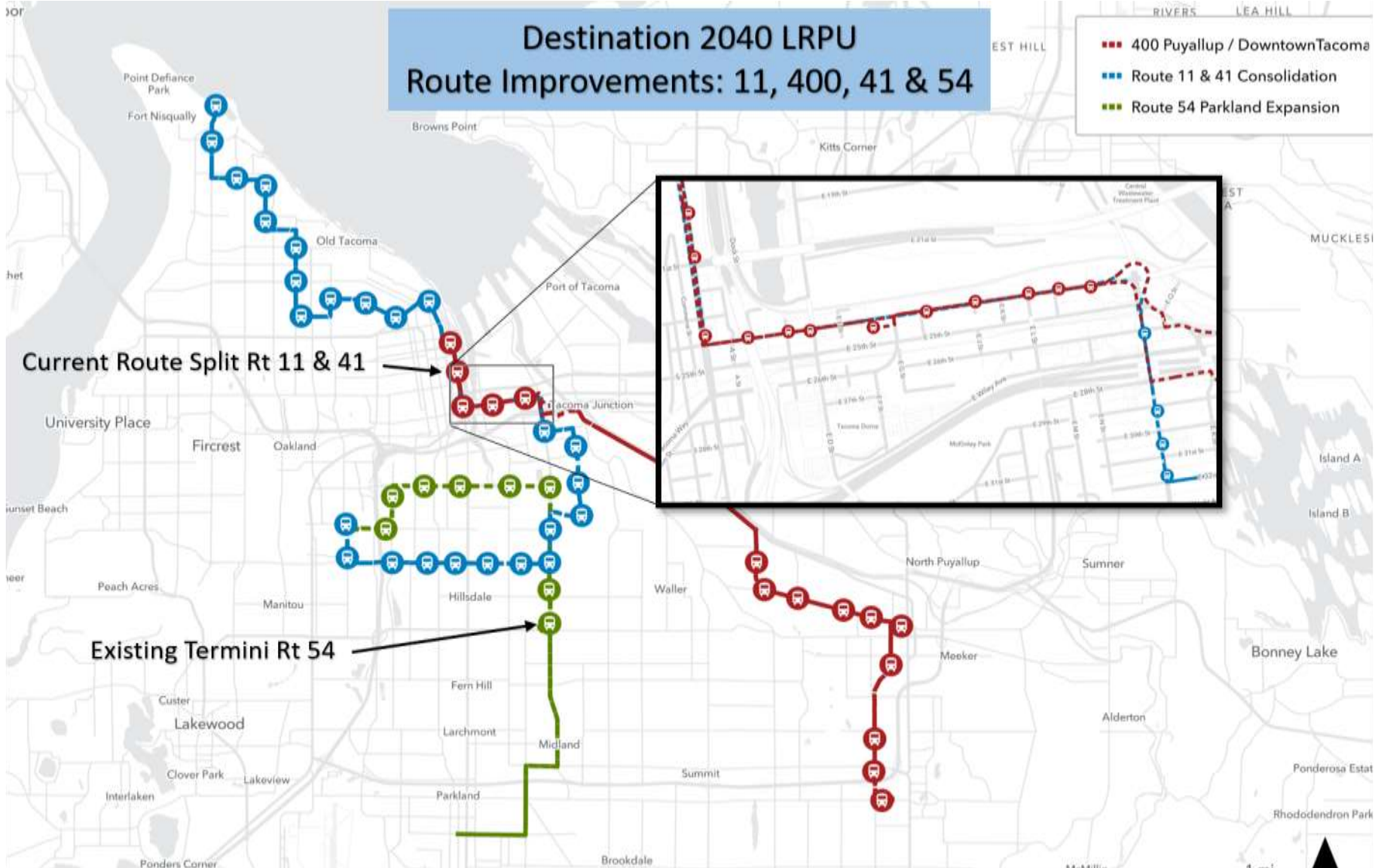


**Pierce Transit is a System with 32 Local Transit Routes  
8.4 Million Boardings in 2019**

# Destination 2040 LRPV

## Route Improvements: 11, 400, 41 & 54

- 400 Puyallup / Downtown Tacoma
- Route 11 & 41 Consolidation
- Route 54 Parkland Expansion



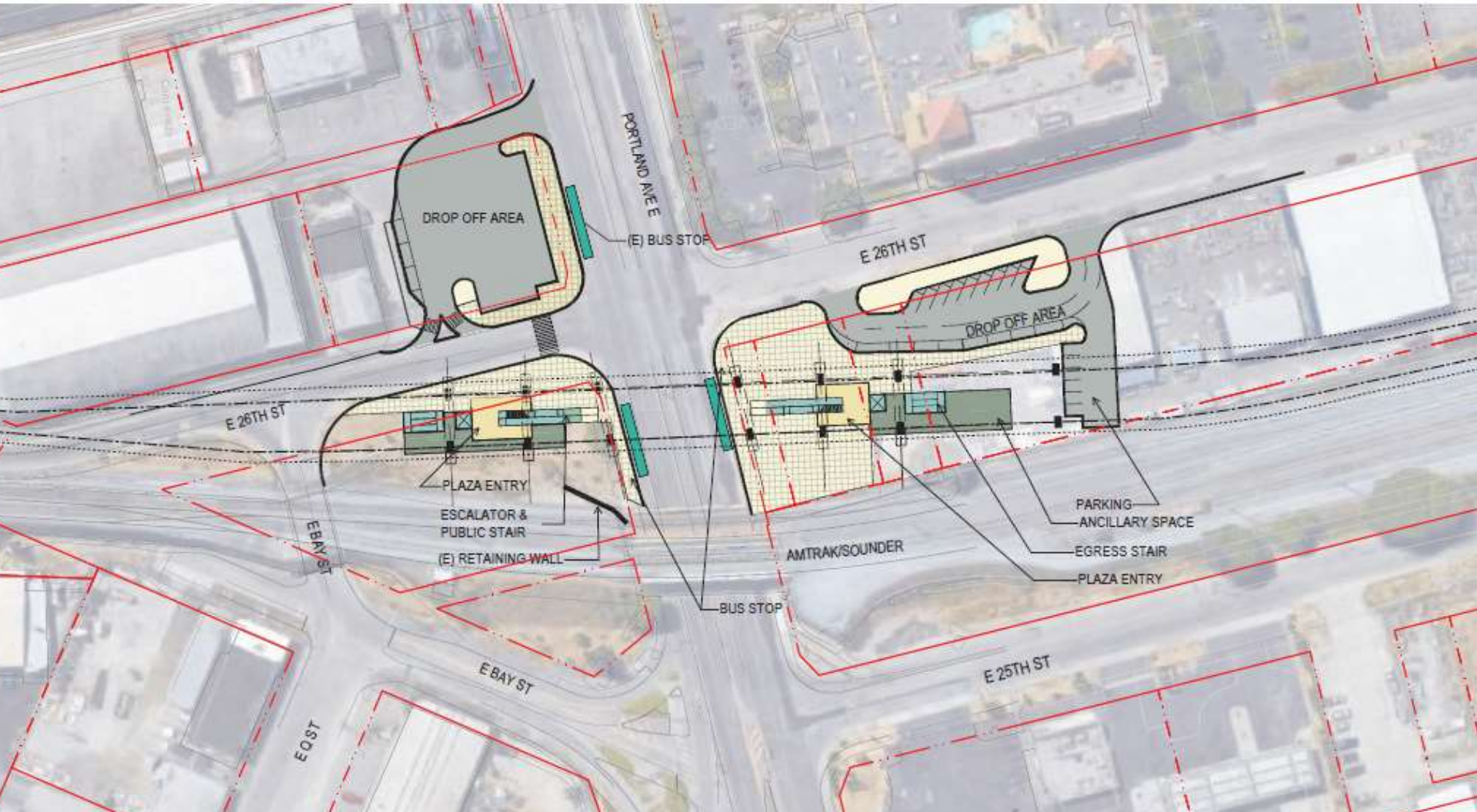
Current Route Split Rt 11 & 41

Existing Termini Rt 54

	2020 Headways	2040 Headways	2020 Span of Service	2040 Span of Service
Route 11	WD 30M WE 60	WD 20M WE 60M	WD 8AM -7:30PM WE 8AM -6PM	WD 6:30AM - 9:30PM WE 8:15AM - 10PM
Route 41	WD 30M WE 60		5:15AM -9:45PM WE 6:15AM - 8:15PM	
Route 54	WD 30M WE 60	WD 20M WE 60M	6:30AM - 9:15PM WE 9:15AM - 8:15 PM	WD 6:15AM - 10:15PM WE 9:15AM - 8:15PM
Route 400	WD 30,60M WE ∅	WD 30M WE 30	WD 4:45AM – 8:15PM WE ∅	WD 4:45AM – 10:15PM WE 8AM – 10PM



# Portland and 26<sup>th</sup> Street Station Area





City of Tacoma  
Transportation Commission

November 9, 2020

Tacoma City Council  
747 Market Street, Rm. 1200  
Tacoma, WA 98402

Subject: Transportation Commission Recommendations for the 2021-2022 Biennial Budget

To the Honorable Mayor Woodards and City Councilmembers

The Transportation Commission reviewed the proposed 2021-2022 Biennial Budget and is excited to see mobility as a key component to the City Council's priority of Access and Community Safety. The Commission supports the City Council's commitment to creating a livable city that provides residents with meaningful access to the things they need in their everyday lives no matter what neighborhood they live in, the color of their skin, what language they speak or any other aspect of their identity. The Commission also supports the need to invest in neighborhoods, create access to transit, create access to economic opportunity, create access to opportunities for youth, and create safe walkable conditions. The City Council's commitments are consistent with the Transportation Master Plan (TMP), which includes *protecting the community, providing mobility for all, and reinforcing Tacoma's land use vision.*

In consideration of the 2021-2020 Biennial Budget and city initiatives, the Transportation Commission encourages you to consider the following comments that *prioritize transportation funding based on the priorities of the Transportation Master Plan*, which are influenced by the Green Hierarchy.

**1. Prioritize pedestrian facilities**

The Commission supports the dedication of funds to make all streets in Tacoma safe for walking and those traveling with assistive devices. Missing sidewalks and hazardous crossings place our most vulnerable users at risk.

**2. Complete bicycle connectivity projects**

Significant investment is needed to provide a safe and connected system for bicyclists. The Commission recognizes that many of the easy projects are completed. The City needs to tackle the ones with the most significant barriers, such as crossing I-5 and prioritizing protected facilities over car lanes.

**3. Prioritize actions and resources for the declared Climate Emergency**

The Commission supports and agrees with the Sustainable Tacoma Commission recommendations to fund the Climate Emergency as an emergency. According to the 2019 Environmental Action Plan, transportation accounted for 73% of greenhouse gas emissions in Tacoma, where single occupancy vehicles contribute significantly to the overall transportation emissions. To reduce greenhouse gas emission, funding active transportation options, mass transit, and electrification is the right thing to do.

4. **Adequately fund the implementation of Vision Zero**  
Upon completion of the Vision Zero Action Plan in 2021, providing seed money to begin implementation in 2021 demonstrates the City's commitment to saying one life lost in a crash is too many. The Commission will work to develop a funding plan that recognizes the need for a dedicated funding source to implement the plan.
5. **Honor the City's commitment to the Transportation Benefit District**  
In 2015, Tacoma voters approved two ballot propositions to fund additional maintenance and improvements to City transportation infrastructure. The ruling on Initiative 976 should not change or displace funds from Public Works projects previously identified in the Transportation Benefit District. The City is responsible for those commitments to improve our transportation network.
6. **Recognize the successes of the 10-year Streets Initiative**  
The work completed through the Streets Initiative funding is vital to the maintenance of existing road infrastructure and improvements to pedestrian, bicycle, transit, and freight infrastructure. Recognizing that these funds were in response to providing a dedicated funding source to alleviate impacts to the General Fund, and that future approval will be based on voter support, it is important to highlight in the Biennial Budget Book that the City has honored what the funds were intended to do.
7. **Implement Impact Fees**  
Impact fees are a tool that will allow for development to directly address the increased demand for services created by their growth. It creates greater certainty for the development community and can be used as a tool to address the City's priorities for safe and convenient transportation.

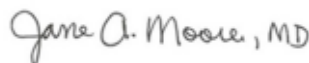
The Transportation Commission's comments are rooted in the goals and policies set forth in the Transportation Master Plan, and the Commission feels that these comments correlate strongly to the City of Tacoma's strategic vision. These comments reflect the values and interests of residents throughout the City. Thank you for the opportunity to comment. We look forward to a better Tacoma.

Thank you,

Sincerely,



Gerritt Nyland  
Co-Chair  
Transportation Commission



Dr. Jane Moore  
Co-Chair  
Transportation Commission

CC:  
City Manager  
Public Works Director  
Planning Commission  
Sustainable Tacoma Commission  
Bicycle and Pedestrian Technical Advisory Group  
Transit Oriented Development Advisory Group